

MICHIGAN
DEPARTMENT OF CONSERVATION
FORESTRY DIVISION

LAND CORNER RECORD

T. 33 N.R. 4 W

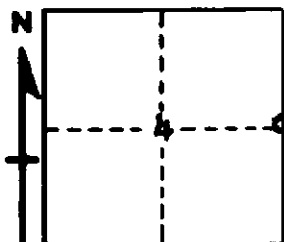
Charlevoix COUNTY

DESCRIPTION OF CORNER 1/4 corner common to Sections 3 and 4

CORNER MONUMENT Set 1" pipe with 4" A luminum cap

DATE MONUMENT PLACED AND WITNESSED 8/31/61

WITNESSES TO CORNER.....



7" R. Pine - N62W - 16.0 feet

7" R. Pine - S27W - 20.8 feet

AND

CIRCLE CORNER REGISTERED

DESCRIPTION IN DETAIL AS TO HOW CORNER WAS LOCATED AND IDENTIFIED OR RESTORED.

This corner was found while making a survey in this area. Found good evidence of old stake bottom at corner, as established in 1905 survey by county surveyor. Checks measurement and line to angle point for old 1880 state road survey which was recovered in this survey. Conforms very well with measurement of record to section corner south. Falls on west edge of present road bed.

SURVEYOR'S SEAL

SIGNED Kenneth J. Otting DATE 9/22/61
REGISTERED LAND SURVEYOR