

MICHIGAN
DEPARTMENT OF CONSERVATION
FORESTRY DIVISION

LAND CORNER RECORD

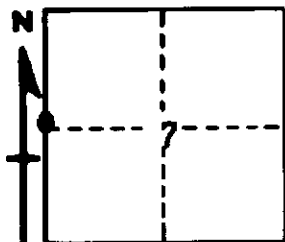
T. 33 N.R. 4 W
T 33 N R 5 W Charlevoix COUNTY

DESCRIPTION OF CORNER 1/4 corner common to Sections 7 and 12

CORNER MONUMENT 1" pipe with 4" Aluminum cap

DATE MONUMENT PLACED AND WITNESSED 10/12/61

WITNESSES TO CORNER.....



5" Maple	-	S17W	-	18.5 feet
8" Basswood	-	N87E	-	10.5 feet

AND

CIRCLE CORNER REGISTERED

DESCRIPTION IN DETAIL AS TO HOW CORNER WAS LOCATED AND IDENTIFIED OR RESTORED.

This corner was found while making a survey in this township. Found old squared stake as located and identified by Marcus Schaaf, Reg. Land Surveyor, in 1930s, at which time one BT was in place and a line tree north. Checks okay for measurement and line north.

SURVEYOR'S SEAL

SIGNED Kenneth Jostling DATE 10/17/61
REGISTERED LAND SURVEYOR