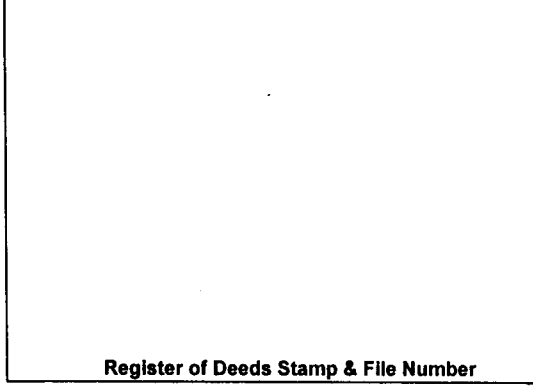


LAND CORNER RECORDATION CERTIFICATE

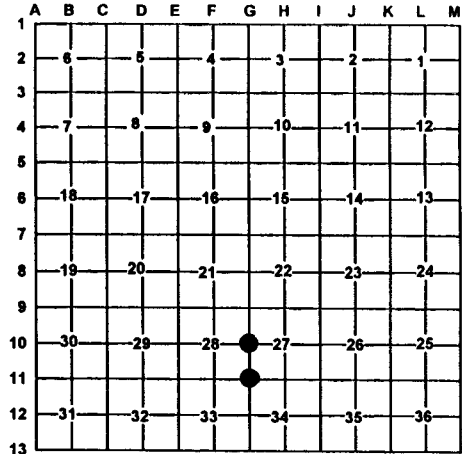
Filing Requirement of Act 74, Mich. PA 1970

For Corners In: Charlevoix (County)	Located In	Corner Code #
1. Public Land Survey	T <u>33N</u> R <u>4W</u>	<u>G-11</u>
	T <u>33N</u> R <u>4W</u>	<u>G-10</u>
2. Property Controlling in Section	S _____ T _____ R _____	_____
	S _____ T _____ R _____	_____
3. Miscellaneous Property in Section	S _____ T _____ R _____	_____
	S _____ T _____ R _____	_____
4. Lot No: _____	Recorded Plat: _____	
5. Private Claims: _____		



I, Carl T. Kiiskila, in a field survey on August, 2000 do hereby state that under requirements of PA 74, Michigan PA of 1970, the corner points mentioned in lines 1 and 2 above were in conformance with regulations and rules therefore as required in the current manual of survey instructions of the United States Department of the Interior, Bureau of Land Management or by a decree of a Court of Law and/or that the corner points mentioned in lines 3, 4 and 5 above were in conformance with the rules of the Michigan Board of Land Surveyors or by a Decree of a Court of Law; established, re-established, monumented, recovered, found as expressed below:

NOTE: Not more than 2 corners, all in the same town and range, may be recorded on this certificate.



A. Description of original monument and accessories and/or subsequent restoration:

G-10 G.L.O. Ch. W. Carthart D.S. 1841
 Set quarter section post
 Wit: Beech 6 S70°E 26 links
 Beech 24 N35°W 15 links

G-11 G.L.O. Ch W. Carthart D.S. 1841
 Set post sections 27,28,33, and 34
 Wit: Gray Ash 10 S30°E 4 links
 Sugar 8 N42°W 13 links

Field book Chandler, Charlevoix Co. survey notes, pages 24-29, E.A. Robinson, found corner no description of monument given.

December 1985, C.F. Roser re-established E.A. Robinson corner and set a standard DNR monument.

B. Description of corner evidence found and/or method applies in restoring or re-establishing corner:

G-10 Re-established the west quarter of section 27 midway and online between G-9 & G-11. G-11 Found DNR monument

C. Description of monument for corner and accessories established to perpetuate locating the position of the corner:

G-10 Set DNR Monument
 Wit: 9" Oak N33°E 14.14'
 13" Oak S77°E 15.05'
 14" Oak S23°E 14.86'
 14" Oak S49°W 10.50'
 Carsonite post North 1'±

G-11 D.N.R. monument
 Wit: *5" Maple N17°W 7.31'
 8" Twin Oak N81°W 7.87'
 *8" Oak S68°E 25.94'
 *8" Oak N29°E 3.56'
 Centerline of power line South 40±

*Old witnesses by others

Signed by: Carl T Kiiskila
 Surveyor's Michigan License No.: 33981

Date: 11-8-00

