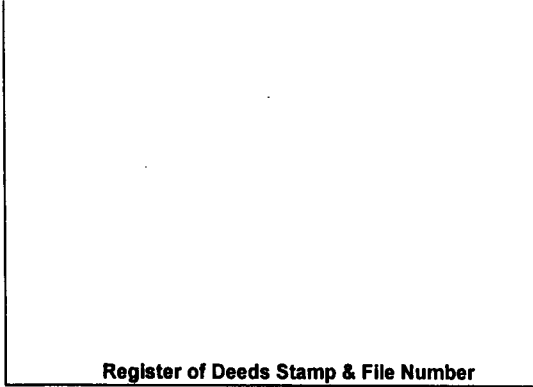


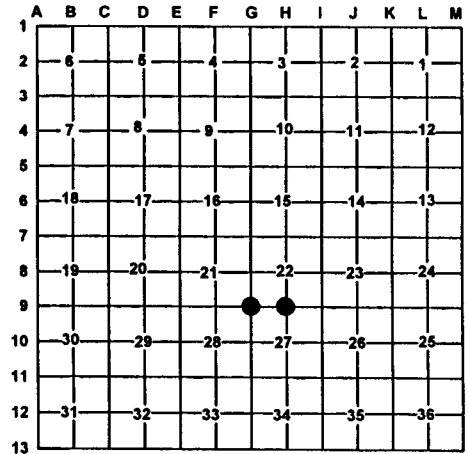
LAND CORNER RECORDATION CERTIFICATE
Filing Requirement of Act 74, Mich. PA 1970

| | | |
|-------------------------------------------|--------------------------|---------------|
| For Corners In: Charlevoix (County) | Located In | Corner Code # |
| 1. Public Land Survey | T <u>33N</u> R <u>4W</u> | <u>G-9</u> |
| | T <u>33N</u> R <u>4W</u> | <u>H-9</u> |
| 2. Property Controlling in Section | S _____ T _____ R _____ | _____ |
| | S _____ T _____ R _____ | _____ |
| 3. Miscellaneous Property in Section | S _____ T _____ R _____ | _____ |
| | S _____ T _____ R _____ | _____ |
| 4. Lot No: _____ | Recorded Plat: _____ | |
| 5. Private Claims: _____ | | |



I, Carl T. Kiiskila, in a field survey on August, 2000 do hereby state that under requirements of PA 74, Michigan PA of 1970, the corner points mentioned in lines 1 and 2 above were in conformance with regulations and rules therefore as required in the current manual of survey instructions of the United States Department of the Interior, Bureau of Land Management or by a decree of a Court of Law and/or that the corner points mentioned in lines 3, 4 and 5 above were in conformance with the rules of the Michigan Board of Land Surveyors or by a Decree of a Court of Law; established, re-established, monumented, recovered, found as expressed below:

NOTE: Not more than 2 corners, all in the same town and range, may be recorded on this certificate.



A. Description of original monument and accessories and/or subsequent restoration:

G-9 G.L.O. Ch. W. Cathcart D.S. 1841
Set post corner to sections 21,22,27 and 28
Wit: Sugar 18 N65°E 11 Links
Sugar 6 S40°W 30 Links

H-9 G.L.O. Ch. W. Cathcart D.S. 1841
A Hemlock 6 inches the quarter section post
Book 116, page 28, Charlevoix Co. survey notes, E.K.
Robinson 1881 set post by proportionate measurement.
September 19888 C.F. Roser P.S., P.E. #12028, found post hole with ring of rocks for corner.

Book 116, page 28, Charlevoix Co. survey notes, E.K.
Robinson 1881. Found corner no description of monument given.

December 6, 1985 C.F. Roser P.S., P.E. #12028, found 1" pipe for corner and replaced it with a standard DNR monument.

B. Description of corner evidence found and/or method applies in restoring or re-establishing corner:

G-9 Found D.N.R. monument

H-9 Found the remains of a wood hub with a ring of rocks at the same position previously found by C.F. Roser P.S., P.E. #12028 for corner.

C. Description of monument for corner and accessories established to perpetuate locating the position of the corner:

G-9 D.N.R. monument

Wit: *6" Maple S30°W 17.71'
*10" Maple S74°W 18.75'
*10" Maple N11°E 15.57'
*8 Maple S53°E 9.65'
*E-W trail road South 40±
Carsonite post North 1±

H-9 D.N.R. Monument

Wit: 8" Basswood N55°E 28.95'
8" Maple S30°e 24.53'
12" Maple S41°W 30.80'
20" Oak N43°W 22.36'
Centerline of E-W trail road South 62'±
Carsonite post North 1'±

* Old witnesses by others.

Signed by: Carl T. Kiiskila
Surveyor's Michigan License No.: 33981

Date: 11-8-00

