

MICHIGAN
DEPARTMENT OF CONSERVATION
FORESTRY DIVISION

LAND CORNER RECORD

T. 33 N.R. 8 W

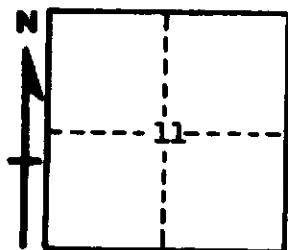
Charlevoix COUNTY

DESCRIPTION OF CORNER 1/4 corner common to Sections 11 and 14

CORNER MONUMENT Set 1" x 36" pipe with brass cap 6" below ground.

DATE MONUMENT PLACED AND WITNESSED 12/7/67

WITNESSES TO CORNER.....



CIRCLE CORNER REGISTERED

Power Pole S 44° 30' W 49.80'

16" Maple S 87° 00' E 32.40'

AND

DESCRIPTION IN DETAIL AS TO HOW CORNER WAS LOCATED AND IDENTIFIED OR RESTORED.

Found $\frac{1}{2}$ " Iron rod and fence East and centerline county road north and south.

SURVEYOR'S SEAL

SIGNED Gregory A. Shadko DATE 12/12/67
GREGORY A. SHADKO
REGISTERED LAND SURVEYOR ~~10000~~
1934