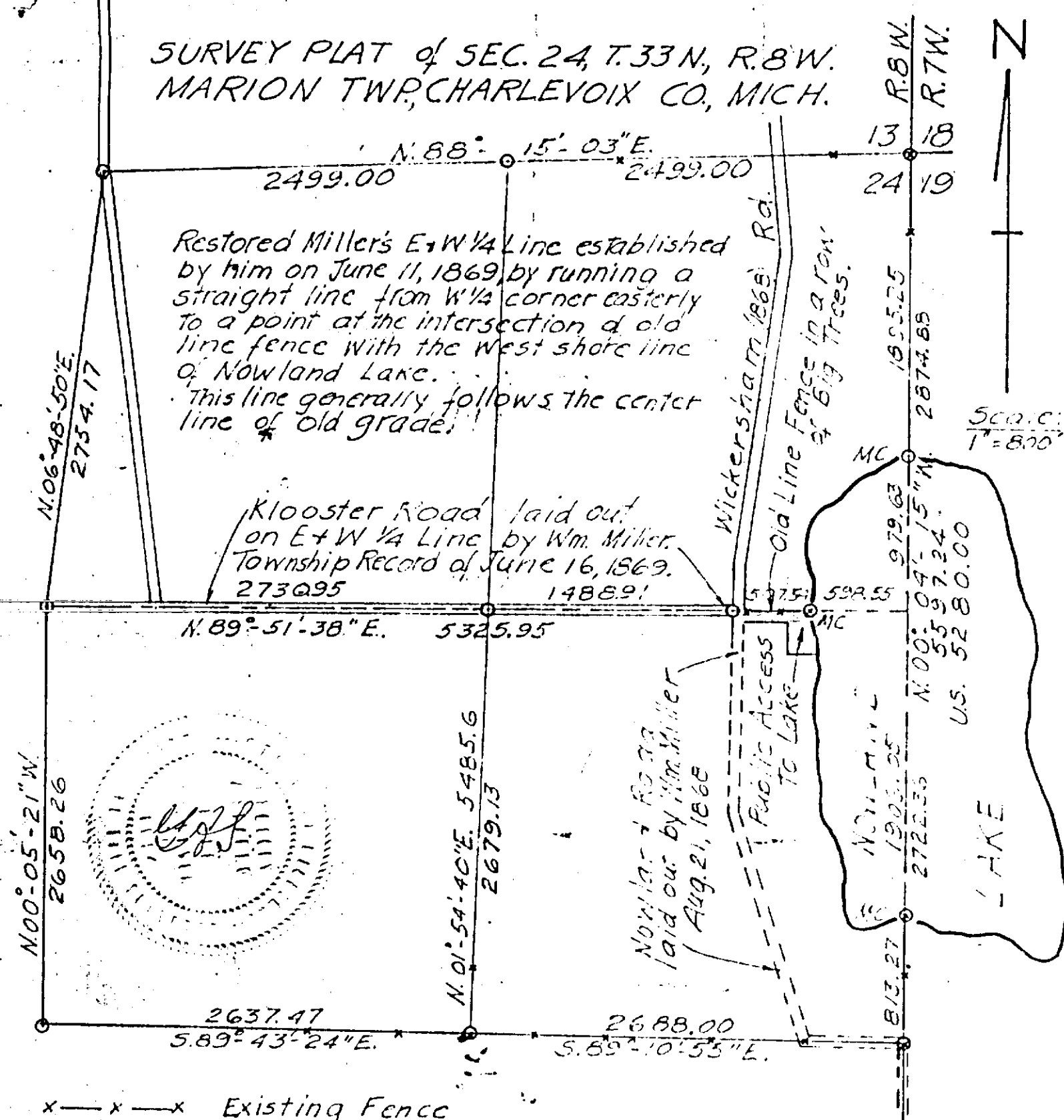


SURVEY PLAT of SEC. 24, T. 33 N., R. 8 W.
MARION TWP, CHARLEVOIX CO., MICH.



Restored Miller's E+W 1/4 Line established by him on June 11, 1869, by running a straight line from W 1/4 corner easterly to a point at the intersection of old line fence with the west shore line of Nowland Lake. This line generally follows the center line of old grade.

Klooster Road laid out on E+W 1/4 Line by Wm. Miller. Township Record of June 16, 1869. 273095

Nowland Road laid out by Wm. Miller Aug. 21, 1868

Wickersham 1868 Rd.

Old Line Fence in a row of Big Trees.

MC

MC

MC

MC

MC

MC

MC

MC

MC

Scale: 1" = 800'

LAKE

x—x—x Existing Fence

⊕ Section Corner Marker - Iron Pipe with state of Michigan Brass Plate

==== Laid out Roads still in use

---- " " " not now in use.

All Bearings shown are True Bearings.

For Witnesses To Corners see Dept. Corner Record in Charlevoix Co. Blog.

Survey under direction of G.A. Shaiko, R.L.S. #1934, Summer of 1967