

99 OCT 22 AM 10:37

LAND CORNER RECORDATION CERTIFICATE  
Filing Requirement of Act 74, Mich. P.A. 1970

*Wayne E. Boss*  
REGISTER OF DEEDS

For corners in  
Charlevoix

Located in: Corner Code #

1. Public Land Survey

2. Property Controlling  
in Section

3. Miscellaneous  
Property in Sec.

T	33N	8W	I-13
T	R		I-1
T	32N	8W	
T	R		
S	T	R	
S	T	R	
S	T	R	
S	T	R	

REGISTER OF DEEDS

SECTION

Register of Deeds Stamp & File Number

4. Lot No. \_\_\_\_\_, Recorded Plat \_\_\_\_\_  
5. Private Claims \_\_\_\_\_

Wayne E. Boss

SEPTEMBER 99

I, \_\_\_\_\_, in a field survey on \_\_\_\_\_, 19\_\_\_\_ do hereby state that under requirements of P.A. 74, Michigan P.A. of 1970, the corner points mentioned in lines 1 and 2 above were in conformance with regulations and rules therefore as required in the current manual of survey instructions of the United States Department of the Interior, Bureau of Land Management or by a decree of a Court of Law and for that the corner points mentioned in lines 3, 4 and 5 above were in conformance with the rules of the Michigan Board of Land Surveyors or by a Decree of a Court of Law, established, re-established, monumented, recovered, found as expressed below:

NOTE: Not more than 2 corners, all in the same town and range, may be recorded on this certificate.

A	B	C	D	E	F	G	H	I	J	K	L	M
1												
2	6	5	4	3	2	1						
3												
4	7	8	9	10	11	12						
5												
6	18	17	16	15	14	13						
7												
8	19	20	21	22	23	24						
9												
10	30	29	28	27	26	25						
11												
12	31	32	33	34	35	36						
13												

- A. Description of original monument and accessories and/or subsequent restoration:
- I-13 MAY & JUNE 1839, JOHN HODGSON, DEPUTY SURVEYOR SET POST 80 CHAINS WEST OF SE COR SUGAR 24' INCH N32°E 32 LINKS BEECH 10 INCH N20°W 33 LINKS NOV. 29, 1979 WE BOSS, P.S. FD. 1/2" IRON PIPE IN C.L. OF ROAD HIGHWAY MONUMENT WEST 40.3' 9" MAPLE N75°E 41.25'
  - JUNE 24, 1922 RF SLOAN, ENGR. FD. GLO POST PLACED IRONPIN NO WITNESSES
  - JUNE 1967 MARY C. FEINDT FD. IRON IN ROAD INTER-SECTION. NO WITNESSES
  - JULY 19, 1974, JULY 21, 1978, JAN. 7, 1980 NB DEYOUNG, P.S. FD. 1/2' PIPE IN C.L. OF N-S ROAD & RD TO EAST HIGHWAY MONUMENT WEST 40.3' 9" MAPLE N75°E 41.25'
  - DECEMBER 30, 1982 LR FEINDT, P.S. FD. 1/2" PIPE IN ROAD CENTER LINE HIGHWAY MONUMENT WEST 40.30' 9" MAPLE N75°E 41.25'

B. Description of corner evidence found and/or method applied in restoring or reestablishing corner:

- I-13 MARCH 1999 FOUND 3/4" O.D. PIPE IN CENTER LINE OF N-S ROAD & ROAD TO EAST FOUND HIGHWAY MONUMENT N84°W 40.30' 20" MAPLE N77°E 41.25' FD. NAIL SW FACE POWER POLE S76°E 52.2' FD. NAIL WEST FACE J-13 TO I-13 GLO 40 CHAINS (2640'), RF SLOAN 2607', MEASURES 2604.12' I-13 TO H-13 40 CHAINS (2640'), MEASURES 2645.38'

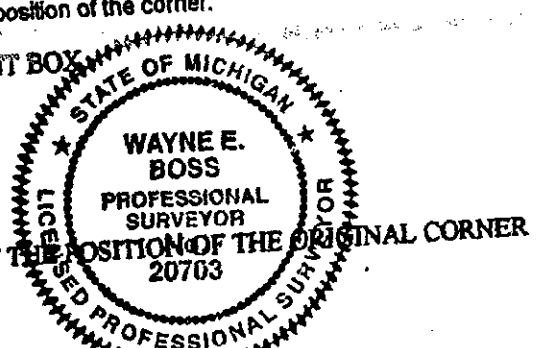
Charlevoix Co. Surveyor

APPROVED  
Signature *Mary C. Feindt*  
Date: *Aug 19, 1999*

C. Description of monument for corner and accessories established to perpetuate locating the position of the corner:

- I-13 PLACED CHARLEVOIX COUNTY STEEL MARKER AND MONUMENT BOX HIGHWAY MONUMENT N84°W 40.30' 20" MAPLE N77°E 41.54' SET NAIL & TAG POWER POLE S76°E 52.71' SET NAIL & TAG 5" RED PINE N58°W 73.05' SET NAIL & TAG

AND IS ACCEPTED AS A CAREFUL & FAITHFUL REESTABLISHMENT OF THE POSITION OF THE ORIGINAL CORNER



Signed by *Wayne E. Boss*  
Surveyor's Michigan License No. 20703

Date SEP. 23, 1999