

99 OCT 22 AM 10:38

LAND CORNER RECORDATION CERTIFICATE  
 Filing Requirement of Act 74, Mich. P.A. 1970

*Wayne E. Boss*

For corners in

Charlevoix

(County)

Located In:

Corner Code #

1. Public Land Survey

T 33NR 8W

J-13 ✓

T \_\_\_ R \_\_\_

T 32NR 8W

J-1

T \_\_\_ R \_\_\_

2. Property Controlling  
 in Section

S \_\_\_ T \_\_\_ R \_\_\_

S \_\_\_ T \_\_\_ R \_\_\_

3. Miscellaneous  
 Property in Sec.

S \_\_\_ T \_\_\_ R \_\_\_

S \_\_\_ T \_\_\_ R \_\_\_

REGISTER OF DEEDS

REGISTER OF DEEDS

SECTION  
 Register of Deeds Stamp & File Number

4. Lot No. \_\_\_\_\_, Recorded Plat \_\_\_\_\_

5. Private Claims \_\_\_\_\_

Wayne E. Boss

SEPTEMBER 99

I, \_\_\_\_\_, in a field survey on \_\_\_\_\_, 19\_\_\_\_ do hereby state that under requirements of P.A. 74, Michigan P.A. of 1970, the corner points mentioned in lines 1 and 2 above were in conformance with regulations and rules therefore as required in the current manual of survey instructions of the United States Department of the Interior, Bureau of Land Management or by a decree of a Court of Law and /or that the corner points mentioned in lines 3, 4 and 5 above were in conformance with the rules of the Michigan Board of Land Surveyors or by a Decree of a Court of Law, established, re-established, monumented, recovered, found as expressed below:

NOTE: Not more than 2 corners, all in the same town and range, may be recorded on this certificate.

	A	B	C	D	E	F	G	H	I	J	K	L	M
1													
2	6	5	4	3	2	1							
3													
4	7	8	9	10	11	12							
5													
6	18	17	16	15	14	13							
7													
8	19	20	21	22	23	24							
9													
10	30	29	28	27	26	25							
11													
12	31	32	33	34	35	36							
13													

A. Description of original monument and accessories and/or subsequent restoration:

J-13	MAY OR JUNE 1839 JOHN HODGSON, DEPUTY SURVEYOR SET ¼ POST 40 CHAINS WEST OF SEC. CORNER SUGAR 10 INCH N50*W 17 LINKS (11.22') SUGAR 8 INCH N22* 17 LINKS (11.22') JUNE 24, 1922, RF SLOAN, ENGINEER FOUND GOVERNMENT CORNER PLACED IRON PIPE, NO WITNESSES NOTED	JULY 19, 1974, NB DEYOUNG PLACED 1/2" IRON IN E-W ROAD & IN LINE WITH FENCE TO SOUTH 10" CEDAR N35*W 52.2' 36' STUMP NORTH 42.0' FENCE POST WEST 15.4'	NOV. 1979, WE BOSS FD. 1/2" IRON 10" CEDAR N35*W 52.2' 36" STUMP NORTH 42' FENCE POST WEST 15.4'
------	---	--	--

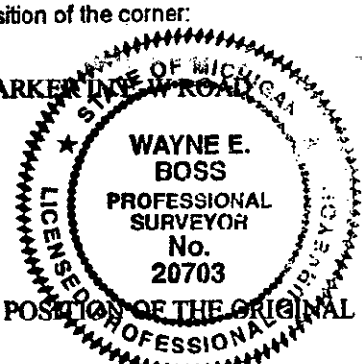
B. Description of corner evidence found and/or method applied in restoring or reestablishing corner:

J-13 MARCH 1999 FOUND 1/2" BY NBD IRON IN ROAD, THIS CORNER DETERMINED TO BE ERRONEOUS  
 8" CHERRY N80\*E 37.3' FD. NAIL IN W. FACE  
 8" ELM S68\*E 53.8' FD. NAIL IN W. FACE  
 7" COTTONWOOD S70\*W 17.7' FD. NAIL IN E. FACE  
 12" CEDAR N33\*W 27.8' NAIL FD. NAIL SE FACE  
 NBD CORNER MEASURES 2540.09' TO K-13 AND 2638.34' TO I-13  
 RESTABLISHED CORNER SET MIDWAY ON LINE BETWEEN I-13 AND K-13  
 NO OCCUPATION FOUND AT NBD CORNER OR CORRECTED CORNER  
 K-13 TO J-13 GLO 40 CHAINS (2640') RF SLOAN 2607', MEASURES 2604.12'  
 J-13 TO I-13 GLO 40 CHAINS (2640') RF SLOAN 2607', MEASURES 2604.12'

Charlevoix Co. Surveyor  
**APPROVED**  
 Signature *May C. Feindt*  
 Date: 9-16-1999

C. Description of monument for corner and accessories established to perpetuate locating the position of the corner:

J-13 OCTOBER 4, 1999 PLACED CORNER CHARLEVOIX COUNTY STEEL MARKER IN W. ROAD  
 8" CHEERY N88\*E 69.58' SET NAIL & TAG  
 8" ELM S70\*E 86.96' SET NAIL & TAG  
 8" ELM S74\*W 20.19' SET NAIL AND TAG  
 6" WHITE ASH N61\*W 33.63' SET NAIL & TAG  
 INCORRECT CORNER LOCATION BY NBD 1/2" IRON S87\*33"E 33.17'  
 SMALL STREAM WEST 468'



AND IS ACCEPTED AS A CAREFUL & FAITHFUL REESTABLISHMENT OF THE POSITION OF THE ORIGINAL CORNER

Signed by *Wayne E. Boss*  
 Surveyor's Michigan License No. 20703

Date Sept. 23, 1999