

MICHIGAN
DEPARTMENT OF CONSERVATION
FORESTRY DIVISION

LAND CORNER RECORD

T. 33 N.R. 1 E

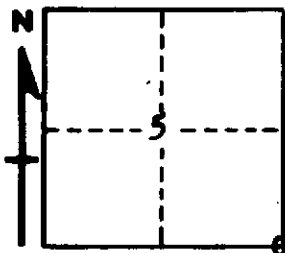
Cheboygan COUNTY

DESCRIPTION OF CORNER Section corner common to Sections 4-5-8-9

CORNER MONUMENT Drove 1 1/2" pipe below surface.

DATE MONUMENT PLACED AND WITNESSED 10/31/62

WITNESSES TO CORNER.....



CIRCLE CORNER REGISTERED

5" Balsam - S53W - 40.3 ft

4" Balsam - N35W - 52.1 ft

AND

DESCRIPTION IN DETAIL AS TO HOW CORNER WAS LOCATED AND IDENTIFIED OR RESTORED.

This corner was restored while making a survey in this township. Set corner at intersection of N-S and W roads where it had been previously established in a survey by Marcus Schaaf in 1940, according to records in this office. Bearing trees were identified in the previous survey. Fits swamp edge north very well.

SURVEYOR'S SEAL

SIGNED *Herbert J. Ostling* DATE 11/1/62
REGISTERED LAND SURVEYOR