

MICHIGAN
DEPARTMENT OF CONSERVATION
FORESTRY DIVISION

LAND CORNER RECORD

T. 33 N.R. 1 E.

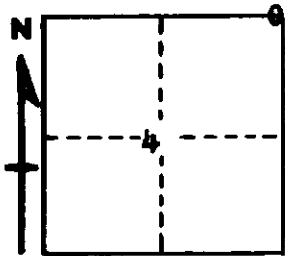
Cheboygan COUNTY

DESCRIPTION OF CORNER Closing corner common to Sections 3 - 4 on north boundary of township

CORNER MONUMENT Left 1 1/4" pipe below surface

DATE MONUMENT PLACED AND WITNESSED September 14, 1962

WITNESSES TO CORNER.....



12" H. Maple N 12 W 54.7'

8" H. Maple S 81 W 53.0'

AND

CIRCLE CORNER REGISTERED

DESCRIPTION IN DETAIL AS TO HOW CORNER WAS LOCATED AND IDENTIFIED OR RESTORED.

This corner was found while making a survey in this area. Found 1 1/2" pipe one foot below surface of old road intersection as previously restored by Marcus Schaaf, R. L. S. in 1930s. Previously marked by a squared stake. Best available evidence of proper position for corner. In line with center of road south and east.

SURVEYOR'S SEAL

SIGNED *Kenneth J. Wetting* DATE October 9, 1962
REGISTERED LAND SURVEYOR