

MICHIGAN
DEPARTMENT OF CONSERVATION
FORESTRY DIVISION

LAND CORNER RECORD

T. 33 N.R. 1 E.

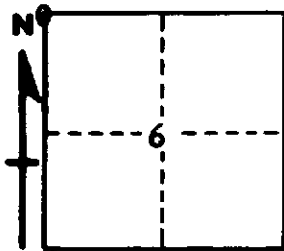
Cheboygan COUNTY

DESCRIPTION OF CORNER Section corner common to Sections 6 - 1 - 36 - 31, T33 & 34N, R1E & 1 W

CORNER MONUMENT Set 1" pipe with 4" aluminum cap

DATE MONUMENT PLACED AND WITNESSED August 30, 1962

WITNESSES TO CORNER.....



7" J. Pine North 33.9'

20" R. Pine S 57 E 112.2'

AND

CIRCLE CORNER REGISTERED

DESCRIPTION IN DETAIL AS TO HOW CORNER WAS LOCATED AND IDENTIFIED OR RESTORED.

This corner was found while making a survey in this township. Found 1 1/4" pipe at corner as established by Marcus Schaaf, R. L. S. in fireline south and west. Checks swamp and lake shore east and swamp south.

SURVEYOR'S SEAL

SIGNED Kenneth J. Delling DATE August 30, 1962
REGISTERED LAND SURVEYOR