

MICHIGAN
DEPARTMENT OF CONSERVATION
FORESTRY DIVISION

LAND CORNER RECORD

T. 33 N.R. 1 E.
T. 33 N.R. 1 W.

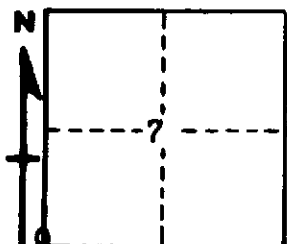
Cheboygan COUNTY

DESCRIPTION OF CORNER Section corner common to Sections 12 - 13 - 7 - 18

CORNER MONUMENT Set 1" pipe with 4" aluminum cap

DATE MONUMENT PLACED AND WITNESSED October 25, 1962

WITNESSES TO CORNER.....



CIRCLE CORNER REGISTERED

6" Cedar S 37 W 21.0'

9" Elm N 41 E 104.3'

AND

DESCRIPTION IN DETAIL AS TO HOW CORNER WAS LOCATED AND IDENTIFIED OR RESTORED.

This corner was found while making a survey in this area. Found very old squared, scribed stake at fence corner, probably established in early local survey. Considered best available evidence. Checks fairly well with stream crossings west and south.

SURVEYOR'S SEAL

SIGNED *Kenneth J. Ostering* DATE November 26, 1962
REGISTERED LAND SURVEYOR