

MICHIGAN
DEPARTMENT OF CONSERVATION
FORESTRY DIVISION

LAND CORNER RECORD

T. 33 N.R. 1 E.
T. 33 N.R. 1 W.

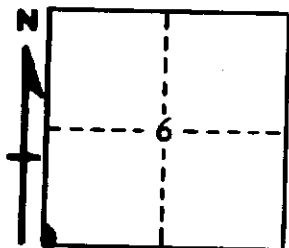
Cheboygan COUNTY

DESCRIPTION OF CORNER Section corner common to Sections 6 - 7 - 1 - 12 on meridian

CORNER MONUMENT Set 1" pipe with 4" aluminum cap

DATE MONUMENT PLACED AND WITNESSED October 26, 1962

WITNESSES TO CORNER.....



7" Cedar N 27 W 9.8'

10" Cedar S 4 W 20.9'

AND

10" Cedar S 69 E 27.7'

DESCRIPTION IN DETAIL AS TO HOW CORNER WAS LOCATED AND IDENTIFIED OR RESTORED.

This corner was found while making a survey of the meridian in this township. Found a 1 1/4" pipe at corner as established by Marcus Schaaf R.L.S. in 1930s. Apparently set by proportionate measurement in previous survey. No positive evidence.

SURVEYOR'S SEAL

SIGNED Kenneth J. Ostling DATE November 26, 1962
REGISTERED LAND SURVEYOR