

MICHIGAN
DEPARTMENT OF CONSERVATION
FORESTRY DIVISION

LAND CORNER RECORD

T. 33 N.R. 1 E.
T. 33 N.R. 1 W.

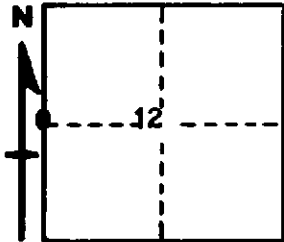
Cheboygan COUNTY

DESCRIPTION OF CORNER 1/4 corner common to Sections 7 - 12

CORNER MONUMENT Set 1" pipe with 4" aluminum cap

DATE MONUMENT PLACED AND WITNESSED October 26, 1962

WITNESSES TO CORNER.....



CIRCLE CORNER REGISTERED

7" Spruce N 35 W 63.5

7" Aspen S 53½ W 35.9'

AND

DESCRIPTION IN DETAIL AS TO HOW CORNER WAS LOCATED AND IDENTIFIED OR RESTORED.

This corner was established by proportionate measurement, midpoint on line, between section corners, while making a survey in this area. Nothing left for original evidence or a previous corner. Falls SW of road junction..

SURVEYOR'S SEAL

SIGNED

Kenneth Ostling
REGISTERED LAND SURVEYOR

DATE November 26, 1962