

MICHIGAN
DEPARTMENT OF CONSERVATION
FORESTRY DIVISION

LAND CORNER RECORD

T. 34 N.R. 1 E.

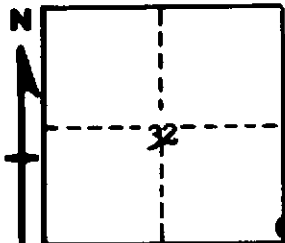
Cheboygan COUNTY

DESCRIPTION OF CORNER Section corner common to Section 32 - 33 on south boundary of township

CORNER MONUMENT Set 1" pipe with 4" aluminum cap

DATE MONUMENT PLACED AND WITNESSED September 14, 1962

WITNESSES TO CORNER.....



CIRCLE CORNER REGISTERED

14" W. Pine stump N 32 E 51.5'

5" Maple N 54 W 85.8'

AND

DESCRIPTION IN DETAIL AS TO HOW CORNER WAS LOCATED AND IDENTIFIED OR RESTORED.

This corner was found while making a survey in this area. Found a 1 1/2" pipe at corner as restored by Marcus Schaaf in 1930s. Corner was restored from NW U. S. BT which could still be identified. Falls near old E - W fence line.

SURVEYOR'S SEAL

SIGNED Kenneth J. Gentry DATE October 9, 1962
REGISTERED LAND SURVEYOR