

MICHIGAN
DEPARTMENT OF CONSERVATION
FORESTRY DIVISION

LAND CORNER RECORD

T. 34 N. R. 1 W

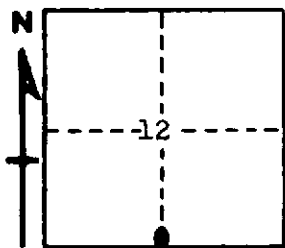
Cheboygan COUNTY

DESCRIPTION OF CORNER 1/4 corner common to sections 12 - 13

CORNER MONUMENT set 1" pipe with 4" aluminum cap

DATE MONUMENT PLACED AND WITNESSED August 1966

WITNESSES TO CORNER.....



CIRCLE CORNER REGISTERED

5" R. Maple S 14 E 23.2'

16" Elm N 24 W 70.7'

AND

DESCRIPTION IN DETAIL AS TO HOW CORNER WAS LOCATED AND IDENTIFIED OR RESTORED.

This corner was found during a survey in this township. Found 1" iron pipe and squared stake as set by unknown surveyor. Remnants of U.S. witness in place, and fits with stream east and occupation west.

SURVEYOR'S SEAL

SIGNED *Kenneth Wetling* DATE 11-18-66
REGISTERED LAND SURVEYOR #20068