

MICHIGAN
DEPARTMENT OF CONSERVATION
FORESTRY DIVISION



LAND CORNER RECORD

T. 34 N.R. 1 W
T. 34 N.R. 1 E

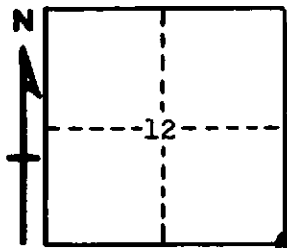
Cheboygan COUNTY

DESCRIPTION OF CORNER Section corner common to sections 7, 18, 12, 13

CORNER MONUMENT Set 1" pipe with 4" aluminum cap

DATE MONUMENT PLACED AND WITNESSED August 1966

WITNESSES TO CORNER.....



CIRCLE CORNER REGISTERED

16" R. Pine S 28 E 104.5'

8" R. Pine stump N 10 E 22.9'

AND

DESCRIPTION IN DETAIL AS TO HOW CORNER WAS LOCATED AND IDENTIFIED OR RESTORED.

This corner was found during a survey in this area. Set corner at point of old stake, scribed and squared, set by unknown surveyor. Fits well with U.S. notes to swamp edge east, 1/4 corner west and section corners north and south.

SURVEYOR'S SEAL

SIGNED Kenneth J. Ostling DATE 11-18-66
REGISTERED LAND SURVEYOR

#10068