

MICHIGAN  
DEPARTMENT OF CONSERVATION  
FORESTRY DIVISION

# LAND CORNER RECORD

T. 34 N.R. 3 W

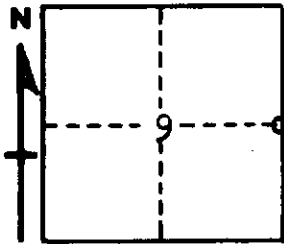
Cheboygan COUNTY

DESCRIPTION OF CORNER 1/4 corner common to Sections 9 and 10

CORNER MONUMENT 1" pipe with 4" brass cap

DATE MONUMENT PLACED AND WITNESSED 6/28/61

WITNESSES TO CORNER.....



8" Cedar - S13W - 17.7 ft

7" Cedar - N30W - 13.6 ft

AND

CIRCLE CORNER REGISTERED

DESCRIPTION IN DETAIL AS TO HOW CORNER WAS LOCATED AND IDENTIFIED OR RESTORED.

This corner was established by proportionate measurement, midpoint on line, between section corners by Forestry Division survey crew while making a survey in this area.

SURVEYOR'S SEAL

SIGNED *Kenneth J. Petting* DATE 7/5/61  
REGISTERED LAND SURVEYOR