

MICHIGAN  
DEPARTMENT OF CONSERVATION  
FORESTRY DIVISION

# LAND CORNER RECORD

T. 34 N.R. 3 W

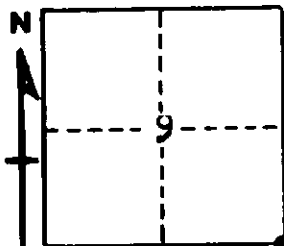
Cheboygan COUNTY

DESCRIPTION OF CORNER Section corner common to Sections 9-10-15-16

CORNER MONUMENT 1" pipe with 1/2" Brass cap

DATE MONUMENT PLACED AND WITNESSED 6/28/61

WITNESSES TO CORNER.....



6" Balsam - N86E - 43.2 ft

6" Maple - S15W - 39.9 ft

AND

CIRCLE CORNER REGISTERED

DESCRIPTION IN DETAIL AS TO HOW CORNER WAS LOCATED AND IDENTIFIED OR RESTORED.

This corner was restored by double proportionate measurement between corners 2 miles north, 2 miles south, 1 mile east, and 1 mile west, by Forestry Division survey crew while making a survey in this township. Unable to identify anything for government BTs.

SURVEYOR'S SEAL

SIGNED Kenneth J. Bething DATE 7/5/61  
REGISTERED LAND SURVEYOR