

MICHIGAN
DEPARTMENT OF CONSERVATION
FORESTRY DIVISION

LAND CORNER RECORD

T. 34 N.R. 3 W

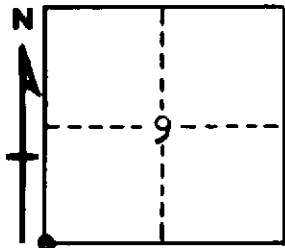
Cheboygan COUNTY

DESCRIPTION OF CORNER Section corner common to Sections 8-9-16-17

CORNER MONUMENT 1" pipe with 4" brass cap

DATE MONUMENT PLACED AND WITNESSED 6/28/61

WITNESSES TO CORNER.....



5" R. Pine - N45W - 80.5 ft

5" Maple - S53W - 35.4 ft

AND

CIRCLE CORNER REGISTERED

DESCRIPTION IN DETAIL AS TO HOW CORNER WAS LOCATED AND IDENTIFIED OR RESTORED.

This corner was restored by proportionate measurement for latitude between section corners 1 mile north and 1 mile south, at apparent center of old N-S township road grade for longitude. Unable to locate anything for a previous corner, and gov't BTs all gone. This makes mile west somewhat short, but this fact is evident in most of the sections in this tier- Sections 8, 5, 17, 20 all being short in E-W dimension. Considered this old grade best available evidence of proper location for corner. Falls nearly in line with field and woods edge west.

SURVEYOR'S SEAL

SIGNED *Kenneth J. Ostling* DATE 7/5/61
REGISTERED LAND SURVEYOR