

MICHIGAN
DEPARTMENT OF CONSERVATION
FORESTRY DIVISION

LAND CORNER RECORD

T. 34 N.R. 3 W

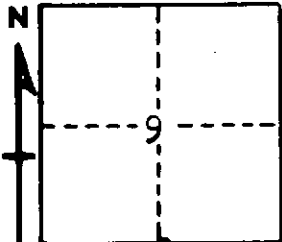
Cheboygan COUNTY

DESCRIPTION OF CORNER 1/4 corner common to Sections 9 and 16

CORNER MONUMENT 1" pipe with 4" brass cap

DATE MONUMENT PLACED AND WITNESSED 6/28/61

WITNESSES TO CORNER.....



6" Basswood - N23W - 13.2 ft

4" H. Maple - N50E - 10.8 ft

AND

CIRCLE CORNER REGISTERED

DESCRIPTION IN DETAIL AS TO HOW CORNER WAS LOCATED AND IDENTIFIED OR RESTORED.

This corner was set by proportionate measurement, midpoint on line, between section corners by Forestry Division survey crew while making a survey in this township. Nothing left for gov't BTs.

SURVEYOR'S SEAL

SIGNED Kenneth J. Ostlund DATE 7/5/61
REGISTERED LAND SURVEYOR