

MICHIGAN
DEPARTMENT OF CONSERVATION
FORESTRY DIVISION

LAND CORNER RECORD

T. 34 N. R. 3W

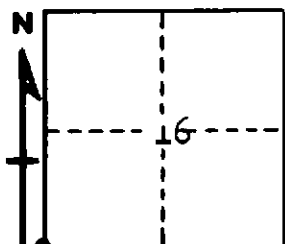
Cheboygan COUNTY

DESCRIPTION OF CORNER Section corner common to Sections 16-17-20-21

CORNER MONUMENT 1" pipe with 4" brass cap, 6" below surface

DATE MONUMENT PLACED AND WITNESSED 6/27/61

WITNESSES TO CORNER.....



20" Maple - N55W - 33.3 ft

6" Beech - S26W - 37.8 ft

AND

CIRCLE CORNER REGISTERED

DESCRIPTION IN DETAIL AS TO HOW CORNER WAS LOCATED AND IDENTIFIED OR RESTORED.

This corner was restored by Forestry Division survey crew while making a survey in this township. Set this corner at apparent intersection of old township road grades north and south and county road grade east and west. Could find no evidence of a previous corner, but occupation, fences and the vintage of the old roads as well as local acceptance would appear to support this position as best available evidence of the proper location for the corner. Fits very well for north-south proportion, and to section corner 2 miles east. The mile west is somewhat short, but this shortage exists in nearly all of this range of sections.

SURVEYOR'S SEAL

SIGNED Kenneth J. Oetting DATE 7/5/61
REGISTERED LAND SURVEYOR