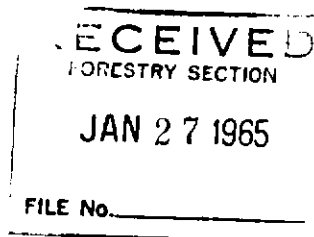


MICHIGAN
DEPARTMENT OF CONSERVATION
FORESTRY DIVISION



LAND CORNER RECORD

T. 35 N.R. 1 E.
T. 35 N.R. 1 W.

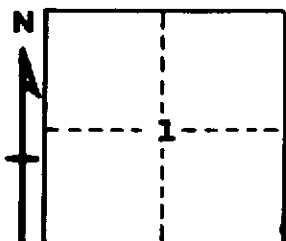
Cheboygan COUNTY

DESCRIPTION OF CORNER Section corner common to Sections 6 - 7 - 1 - 12

CORNER MONUMENT Set 1" pipe with 4" aluminum cap

DATE MONUMENT PLACED AND WITNESSED November 13, 1964

WITNESSES TO CORNER.....



10" R. Pine S 43 E 10.9'

18" W. Pine S 52 W 98.6'

AND

CIRCLE CORNER REGISTERED

DESCRIPTION IN DETAIL AS TO HOW CORNER WAS LOCATED AND IDENTIFIED OR RESTORED.

This corner was found while making a survey in this area. Found 1 1/4" pipe at corner. Two U.S.B.T.s in place with partial face and notch. Good original corner.

SURVEYOR'S SEAL

SIGNED Kenneth Ostling DATE January 20, 1965
REGISTERED LAND SURVEYOR #10068