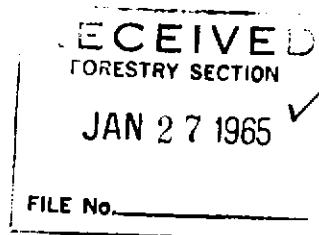


MICHIGAN
DEPARTMENT OF CONSERVATION
FORESTRY DIVISION



LAND CORNER RECORD

T. 35 N.R. 1 E & 1 W.
T. 36 N.R. 1 E & 1 W.

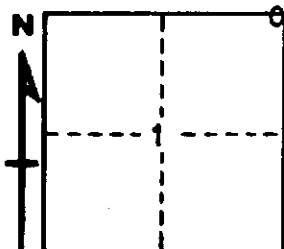
Cheboygan COUNTY

DESCRIPTION OF CORNER Section corner common to Sections 6 - 1 - 31 - 36

CORNER MONUMENT Left 1 1/4" pipe in place

DATE MONUMENT PLACED AND WITNESSED December 4, 1964

WITNESSES TO CORNER.....



8" Cedar S 69 E 17.1'

7" Cedar North 26.0'

AND

CIRCLE CORNER REGISTERED

DESCRIPTION IN DETAIL AS TO HOW CORNER WAS LOCATED AND IDENTIFIED OR RESTORED.

This corner was found while making a survey in this area. Found 1 1/4" pipe at corner as established in a previous survey. Two probable U. S. BT stumps in place, and appears to have been used in other surveys in area. Checks good with corner south on Meridian.

SURVEYOR'S SEAL

SIGNED *Walter J. Ostling* DATE January 25, 1965
REGISTERED LAND SURVEYOR #10068