

MICHIGAN
DEPARTMENT OF CONSERVATION
FORESTRY DIVISION

LAND CORNER RECORD

T. 35 N.R. 1 W

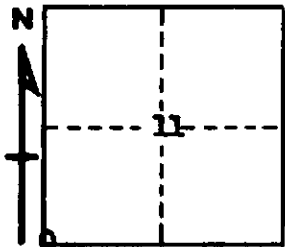
Cheboygan COUNTY

DESCRIPTION OF CORNER Sec. corner common to sections, 10, 11, 14 and 15

CORNER MONUMENT Set 1" pipe with 4" aluminum cap

DATE MONUMENT PLACED AND WITNESSED September 29, 1965

WITNESSES TO CORNER.....



5" H. Maple S 44 E 25.9'

7" H. Maple N 27 W 63.6'

AND

CIRCLE CORNER REGISTERED

DESCRIPTION IN DETAIL AS TO HOW CORNER WAS LOCATED AND IDENTIFIED OR RESTORED.

This corner was set by single proportionate measurement between corners 1 mile north and 1 mile south. Falls in north-south fence line on east boundary Legrand Ranch.

SURVEYOR'S SEAL

SIGNED *Kenneth Ostling* DATE October 21, 1965
REGISTERED LAND SURVEYOR # 10068