

MICHIGAN
DEPARTMENT OF CONSERVATION
FORESTRY DIVISION

LAND CORNER RECORD

T. 35 N. R. 1W

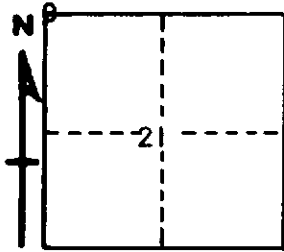
CHEBOYGAN COUNTY

DESCRIPTION OF CORNER SECTION CORNER COMMON TO SECTIONS 16 - 17 - 20 - 21

CORNER MONUMENT 1" PIPE WITH 4" ALUMINUM CAP

DATE MONUMENT PLACED AND WITNESSED JUNE 25, 1965

WITNESSES TO CORNER.....



8" HARD MAPLE N31E 27.7

6" HARD MAPLE S13W 19.7

AND

CIRCLE CORNER REGISTERED

DESCRIPTION IN DETAIL AS TO HOW CORNER WAS LOCATED AND IDENTIFIED OR RESTORED.

FOUND WHILE MAKING A SURVEY IN THIS AREA. FOUND 6" CONCRETE MONUMENT AT FENCE CORNER, AS ESTABLISHED IN A PREVIOUS SURVEY BY BOWEN. OBTS GONE, BUT CHECKS GOOD FOR MEASUREMENT TO OTHER CORNERS IN VICINITY. FENCES IN ALL DIRECTIONS FROM CORNER.

SURVEYOR'S SEAL

SIGNED Kenneth Ostling DATE JULY 1, 1965
REGISTERED LAND SURVEYOR

K. J. OSTLING - #10068