

MICHIGAN
DEPARTMENT OF CONSERVATION
FORESTRY DIVISION

LAND CORNER RECORD

T. 35 N.R. 1W

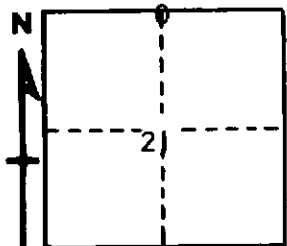
CHEBOYGAN COUNTY

DESCRIPTION OF CORNER 1/2 CORNER COMMON TO SECTIONS 16 - 21

CORNER MONUMENT SET 1" PIPE WITH 4" ALUMINUM CAP

DATE MONUMENT PLACED AND WITNESSED JUNE 25, 1965

WITNESSES TO CORNER.....



CIRCLE CORNER REGISTERED

8" MAPLE CLUMP N47W 67.1

7" MAPLE CLUMP N68E 120.5

AND

DESCRIPTION IN DETAIL AS TO HOW CORNER WAS LOCATED AND IDENTIFIED OR RESTORED.

THIS CORNER WAS ESTABLISHED BY PROPORTIONATE MEASUREMENT, MIDPOINT ON LINE, BETWEEN SECTION CORNERS. NOTHING LEFT FOR U.S. EVIDENCE. FALLS ABOUT 2" NORTH OF E-W FENCE LINE.

SURVEYOR'S SEAL

SIGNED *Kenneth Ostling* DATE JULY 1, 1965
REGISTERED LAND SURVEYOR

K. J. Ostling - #10068