

MICHIGAN
DEPARTMENT OF CONSERVATION
FORESTRY DIVISION

LAND CORNER RECORD

T. 35 N.R. 1W

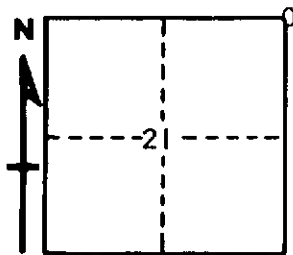
CHEBOYGAN COUNTY

DESCRIPTION OF CORNER SECTION CORNER COMMON TO SECTIONS 15 - 16 - 21 - 22

CORNER MONUMENT 1" PIPE WITH 4" ALUMINUM CAP

DATE MONUMENT PLACED AND WITNESSED JUNE 25, 1965

WITNESSES TO CORNER.....



7" ELM N75W 78.5

NOTHING ELSE WORTH NOTING

AND

CIRCLE CORNER REGISTERED

DESCRIPTION IN DETAIL AS TO HOW CORNER WAS LOCATED AND IDENTIFIED OR RESTORED.

THIS CORNER WAS FOUND WHILE MAKING A SURVEY IN THIS TOWNSHIP. FOUND OLD SQUARED POST AT CORNER, ABOUT 2' SE OF FENCE INTERSECTION. CHECKS GOOD WITH CORNERS, SOUTH AND WEST. NO EVIDENCE OF ~~POSTS~~ BUT THIS CORNER WAS APPARENTLY ESTABLISHED IN AN EXTENSIVE SURVEY OF SECTIONS 15 and 16.

SURVEYOR'S SEAL

SIGNED *Kenneth Ostling* DATE JULY 1, 1965
REGISTERED LAND SURVEYOR
K. J. Ostling, #10068