

MICHIGAN
DEPARTMENT OF CONSERVATION
FORESTRY DIVISION



LAND CORNER RECORD

T. 35 N. R. 1W

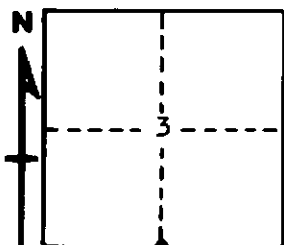
CHEBOYGAN COUNTY

DESCRIPTION OF CORNER 1/4 CORNER COMMON TO SECTIONS 3 - 10

CORNER MONUMENT SET 1" PIPE WITH 4" ALUMINUM CAP

DATE MONUMENT PLACED AND WITNESSED JUNE 23, 1965

WITNESSES TO CORNER.....



7" ASPEN N10W 12.2

Nothing else worth noting

AND

CIRCLE CORNER REGISTERED

DESCRIPTION IN DETAIL AS TO HOW CORNER WAS LOCATED AND IDENTIFIED OR RESTORED.

THIS CORNER WAS SET BY PROPORTIONATE MEASUREMENT, MIDPOINT ON LINE BETWEEN SECTION CORNERS, WHILE MAKING A SURVEY IN THIS TOWNSHIP. FALLS EXACTLY IN EAST-WEST FENCE LINE, BUT NO EVIDENCE OF PREVIOUS CORNER. FENCE WAS APPARENTLY ESTABLISHED AS RESULT OF PREVIOUS SURVEY.

SURVEYOR'S SEAL

SIGNED *Kenneth J. Ostling* DATE JUNE 30, 1965
REGISTERED LAND SURVEYOR
K.J. Ostling - #10068