

✓

MICHIGAN  
DEPARTMENT OF CONSERVATION  
FORESTRY DIVISION

# LAND CORNER RECORD

T. 35 N. R. 1W

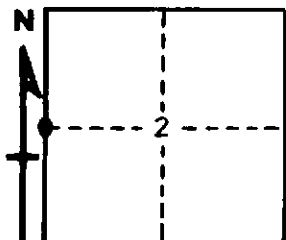
CHEBOYGAN COUNTY

DESCRIPTION OF CORNER ¼ CORNER COMMON TO SECTIONS 2 - 3

CORNER MONUMENT SET 1" PIPE WITH 4" ALUMINUM CAP

DATE MONUMENT PLACED AND WITNESSED JUNE 23, 1965

WITNESSES TO CORNER.....



5" MAPLE CLUMP SB9E 14.6

Nothing else near

AND

CIRCLE CORNER REGISTERED

DESCRIPTION IN DETAIL AS TO HOW CORNER WAS LOCATED AND IDENTIFIED OR RESTORED.

THIS CORNER WAS SET BY PROPORTIONATE MEASUREMENT BETWEEN SECTION CORNERS WHILE MAKING A SURVEY IN THIS TOWNSHIP. NO ORIGINAL EVIDENCE.

SURVEYOR'S SEAL

SIGNED *Kenneth J. Ostling* DATE JUNE 30, 1965  
REGISTERED LAND SURVEYOR  
K. J. Ostling, #10068