

MICHIGAN  
DEPARTMENT OF CONSERVATION  
FORESTRY DIVISION



# LAND CORNER RECORD

T. 35 N.R. 1W

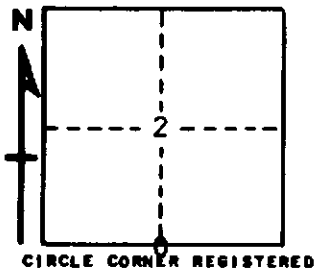
CHEBOYGAN COUNTY

DESCRIPTION OF CORNER ‡ CORNER COMMON TO SECTIONS 2 - 11

CORNER MONUMENT 1" PIPE WITH 4" ALUMINUM CAP

DATE MONUMENT PLACED AND WITNESSED JUNE 22, 1965

WITNESSES TO CORNER.....



6" TWIN BEECH S47E 31.7

7" ASPEN N46W 15.7

AND

**DESCRIPTION IN DETAIL AS TO HOW CORNER WAS LOCATED AND IDENTIFIED OR RESTORED.**

THIS CORNER WAS SET BY PROPORTIONATE MEASUREMENT, MIDPOINT ON LINE, BETWEEN SECTION CORNERS, WHILE MAKING A SURVEY IN THIS AREA. NO EVIDENCE OF OBTS, OR PREVIOUS CORNER.

**SURVEYOR'S SEAL**

SIGNED *Kenneth J. Ostling* DATE JUNE 30, 1965  
REGISTERED LAND SURVEYOR  
K. J. Ostling, #10068