

MICHIGAN
DEPARTMENT OF CONSERVATION
FORESTRY DIVISION

LAND CORNER RECORD

T. 35 N. R. 1

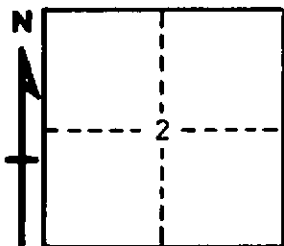
CHEBOYGAN COUNTY

DESCRIPTION OF CORNER SECTION CORNER COMMON TO SECTIONS 1 - 2 - 11 - 12

CORNER MONUMENT 1" PIPE WITH 4" ALUMINUM CAP

DATE MONUMENT PLACED AND WITNESSED JUNE 23, 1965

WITNESSES TO CORNER.....



10" BEECH S35W 41.3

6" TW.H. MAPLE N60W 34.3'

AND

CIRCLE CORNER REGISTERED

DESCRIPTION IN DETAIL AS TO HOW CORNER WAS LOCATED AND IDENTIFIED OR RESTORED.

THIS CORNER WAS SET WHILE MAKING A SURVEY IN THIS AREA. SET CORNER ON LINE OVER ORIGINAL $\frac{1}{4}$ CORNER AND SECTION CORNER NORTH, AT RECORD MEASUREMENT SOUTH FROM $\frac{1}{4}$ CORNER. NO EVIDENCE OF PREVIOUS CORNER, AND OBTS GONE. FELT THIS A REASONABLE RESTORATION IN VIEW OF GOOD CORNERS NORTH. CHECK OKAY FOR MEASUREMENT EAST AND WEST.

SURVEYOR'S SEAL

SIGNED Kenneth J. Ostling DATE JUNE 30, 1965
REGISTERED LAND SURVEYOR
K. J. Ostling, #10068