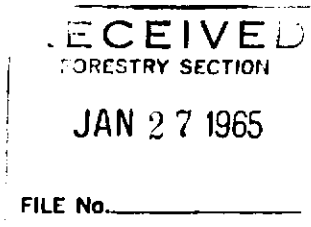


MICHIGAN
DEPARTMENT OF CONSERVATION
FORESTRY DIVISION



LAND CORNER RECORD

T. 35 N. R. 1 W.

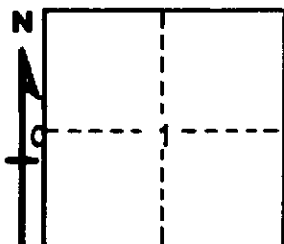
Cheboygan COUNTY

DESCRIPTION OF CORNER 1/4 corner common to Sections 1 - 2

CORNER MONUMENT Set 1" pipe with 4" aluminum cap

DATE MONUMENT PLACED AND WITNESSED December 4, 1964

WITNESSES TO CORNER..... _____



CIRCLE CORNER REGISTERED

8" Cedar S 82 W 32.3'

24" Cedar stump N 6 E 14.6'

AND _____

DESCRIPTION IN DETAIL AS TO HOW CORNER WAS LOCATED AND IDENTIFIED OR RESTORED.

This corner was found while making a survey in this township. Found post at corner--down but well preserved which is believed to be the original government post. Both original BT stumps in place with good scribe marks. Very good government corner.

SURVEYOR'S SEAL

SIGNED Kenneth D. Selling DATE January 25, 1965
REGISTERED LAND SURVEYOR #10068