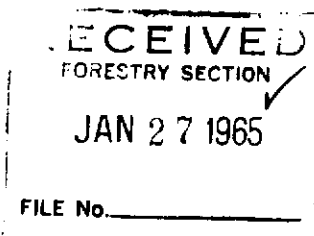


MICHIGAN
DEPARTMENT OF CONSERVATION
FORESTRY DIVISION



LAND CORNER RECORD

T. 35 N.R. 1 & 2 W.
T. 36 N R 1 & 2 W.

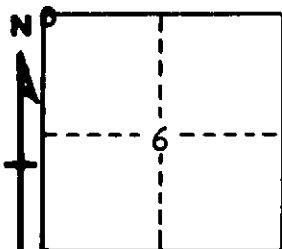
Cheboygan COUNTY

DESCRIPTION OF CORNER Section corner to Sections 6 - 1 - 31 - 36

CORNER MONUMENT Set 1" pipe with 4" brass cap

DATE MONUMENT PLACED AND WITNESSED September 3, 1964

WITNESSES TO CORNER..... _____



7" H. Maple N 22 W 30.6'

9" R. Oak S 36 W 53.3'

AND _____

CIRCLE CORNER REGISTERED

DESCRIPTION IN DETAIL AS TO HOW CORNER WAS LOCATED AND IDENTIFIED OR RESTORED.

This corner was restored while making a survey in this township. Set corner by double proportionate measurement between corners one mile west, one mile east, one mile south and two miles north. Hardwood U.S.B.T.s all gone, but checks good for measurement to all corners mentioned.

SURVEYOR'S SEAL

SIGNED *Ronald J. Jettley* DATE January 20, 1965
REGISTERED LAND SURVEYOR #10068