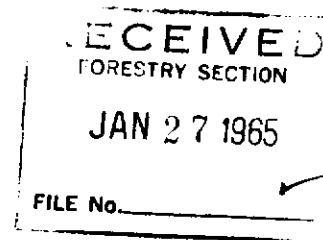


MICHIGAN
DEPARTMENT OF CONSERVATION
FORESTRY DIVISION



LAND CORNER RECORD

T. 35 N.R. 2 W.

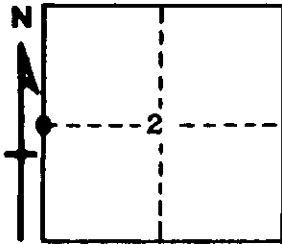
Cheboygan COUNTY

DESCRIPTION OF CORNER 1/4 corner common to Sections 2 - 3

CORNER MONUMENT Set 1" pipe with 4" brass cap

DATE MONUMENT PLACED AND WITNESSED September 3, 1964

WITNESSES TO CORNER.....



CIRCLE CORNER REGISTERED

5" Maple N 26 E 17.7'

5" Balsam S 88 E 18.8'

AND

DESCRIPTION IN DETAIL AS TO HOW CORNER WAS LOCATED AND IDENTIFIED OR RESTORED.

This corner was set while making a survey in this township. Set corner by proportionate measurement between section corners. Unable to identify anything for USBTs but this point fits swamp edges and streams very well.

SURVEYOR'S SEAL

SIGNED *Kenneth J. Bellamy* DATE September 3, 1964
REGISTERED LAND SURVEYOR #10068