

LAND CORNER RECORDATION CERTIFICATE

Filing Requirement of Act 74, Mich. PA 1970

For Corners In: _____
 Cheboygan _____ Located In _____ Corner Code # _____
 (County)

1. Public Land Survey	T	35N	R	2W	K-3
	T	_____	R	_____	_____
2. Property Controlling in Section	S	T	_____	R	_____
	S	T	_____	R	_____
3. Miscellaneous Property in Section	S	T	_____	R	_____
	S	T	_____	R	_____

4. Lot No: _____ Recorded Plat: _____

5. Private Claims: _____

I, Carl T. Kiiskila, in a field survey on June 6, 2002 do hereby state that under requirements of PA 74, Michigan PA of 1970, the corner points mentioned in lines 1 and 2 above were in conformance with regulations and rules therefore as required in the current manual of survey instructions of the United States Department of the Interior, Bureau of Land Management or by a decree of a Court of Law and/or that the corner points mentioned in lines 3, 4 and 5 above were in conformance with the rules of the Michigan Board of Land Surveyors or by a Decree of a Court of Law; established, re-established, monumented, recovered, found as expressed below:

NOTE: Not more than 2 corners, all in the same town and range, may be recorded on this certificate.

A. Description of original monument and accessories and/or subsequent restoration:

K-3 G.L.O. Harvey Mullen 1855
 Set post at corner 1,2,11 & 12
 Wit: Yellow Pine 20 N62°E 22 links
 Yellow Pine 20 N77°W 43 links

January 1962 Liber A, Page 282 (Dean C. DeLaMater R.L.S.#5778) witnessed 1/2" pipe placed by United Associates, Inc.

Wit: 8" Oak Cluster S05°W 29.78'
 Power Pole N70°E 76.56'
 4' J. Pine S25°E 40.76'

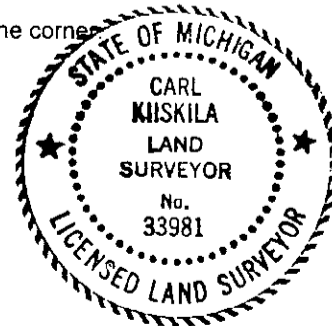
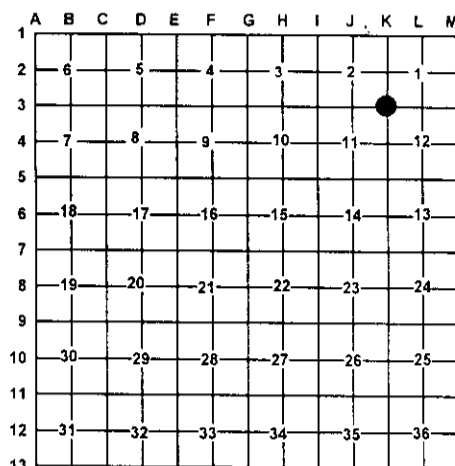
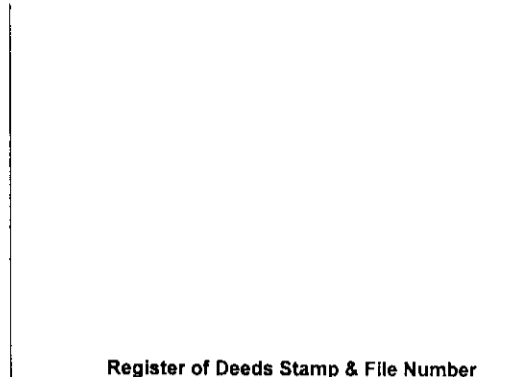
September, 1964 Kenneth J. Ostling R.L.S. #10068 used this corner for prorating the east quarter corner of section 2, 1/2 mile to the North. No type of monument or witnesses given.

B. Description of corner evidence found and/or method applies in restoring or re-establishing corner:

K-3 Found a 1/2" X 17" iron pipe fitting Dean C. DeLaMater's witnesses and Kenneth J. Ostling's survey in section 2. The corner falls in the center of a East-West gravel road

C. Description of monument for corner and accessories established to perpetuate locating the position of the corner:

K-3 Set a 1" X 24" pipe with 4" aluminum cap
 Wit: P. Pole N75°E 76.36'
 10" J. Pine S24°E 40.60'
 10" Oak S19°W 29.89'
 10" R. Pine N43°W 86.07'



Signed by: Carl T. Kiiskila
 Surveyor's Michigan License No.: 33981

Date: 7-17-02