

SURVEY & MONUMENTATION

JAN 23 1996

CHEBOYGAN COUNTY REMONUMENTATION CORNER LAND CORNER RECORDATION CERTIFICATE
Filing Requirement of Act 74, Mich. P.A. 1970

COMMISSION

For corners in CHEBOYGAN
 (County)

Located In:	T <u>35N</u> R <u>3W</u>	Corner Code #	<u>M-3</u>
	T _____ R _____		_____
	T _____ R _____		_____
	T _____ R _____		_____
	T _____ R _____		_____
1. Public Land Survey	S _____ T _____ R _____		_____
2. Property Controlling in Section	S _____ T _____ R _____		_____
3. Miscellaneous Property in Section	S _____ T _____ R _____		_____

RECEIVED FOR RECORD

95 DEC 26 PM 2:28

Joanna Gray
 CLERK/REGISTER
 CHEBOYGAN COUNTY, MICHIGAN

Register of Deeds Stamp & File Number

4. Lot No. _____, Recorded Plat _____
 5. Private Claims _____

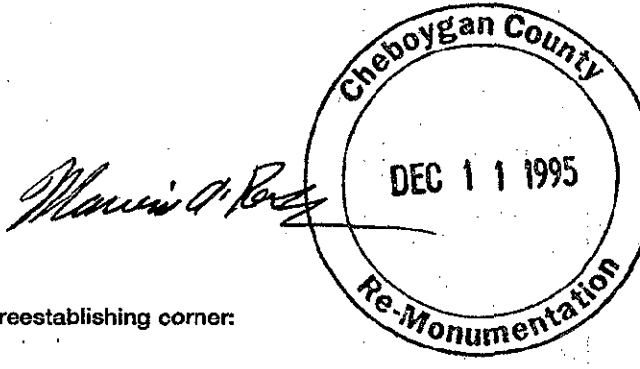
A	B	C	D	E	F	G	H	I	J	K	L	M
2	6	5	4	3	2	1						
3												
4	7	8	9	10	11	12						
5												
6	18	17	16	15	14	13						
7												
8	19	20	21	22	23	24						
9												
10	30	29	28	27	26	25						
11												
12	31	32	33	34	35	36						
13												

I, RICHARD C. DUNN, in a field survey on AUGUST, 19 95, do hereby certify that under requirements of P.A. 74, Michigan P.A. of 1970, the corner points mentioned in lines 1 and 2 above were in conformance with regulations and rules therefore as required in the current manual of survey instructions of the United States Department of the Interior, Bureau of Land Management or by a decree of a Court of Law and/or that the corner points mentioned in lines 3, 4 and 5 above were in conformance with the rules of the Michigan Board of Professional Surveyors or by a Decree of a Court of Law; established, re-established, monumented, re-monumented, recovered, found as expressed below:

NOTE: Not more than 4 corners, all in the same town and range, may be recorded on this certificate.

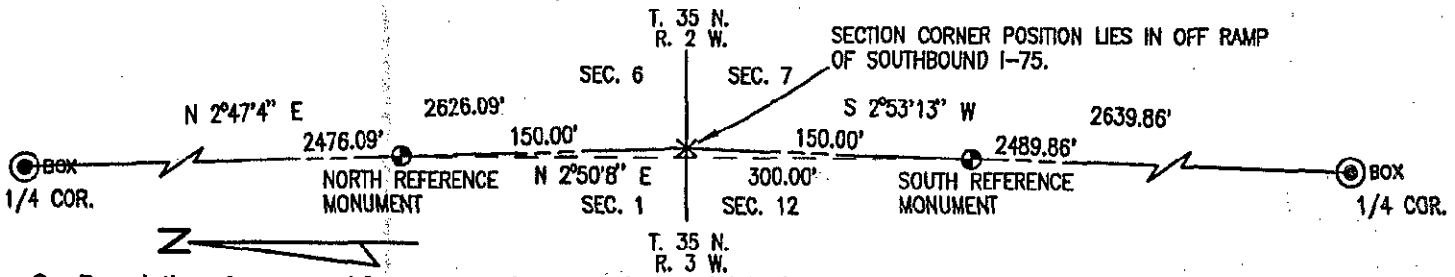
A. Description of original monument and accessories and/or subsequent restoration:

- | | |
|------------------------------|------------------------------|
| G.L.O. John Mullett 1840 | State Hwy. Map |
| Set Post Corner Secs. 1 & 12 | "As Constructed" Sep't. 1959 |
| 6" Cedar S81°W 13 Links | 3/4" Gas Pipe |
| 5" Cedar N88°E 7 Links | 9" Elm S60°W 99.78' |
| | 11" Balsam N67°W 61.37' |
| | 15" W Pine N13°E 93.19' |
| | Sta.334.40.13 (N.B.Curve) |
| | File #V-1-1B, State Project |
| | 175-5, Sheet #20 |



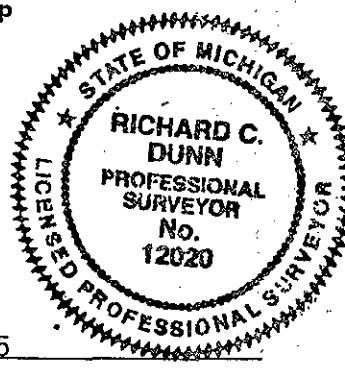
B. Description of corner evidence found and/or method applied in restoring or reestablishing corner:

No corner or witnesses recovered.
 Corner position reestablished from survey by George Young dated November 23, 1973 as recorded in Liber 346, page 37, Cheboygan County Records and MDOT Right-of-Way and as built drawing of I-75 and M-27.
 Reference monuments set as shown hereon.
 Corner position falls in concrete off ramp of I-75 South bound exit 313 and was not monumented.



C. Description of monument for corner and accessories established to perpetuate locating the position of the corner:

- | | |
|--|--|
| M-3 North reference monument | South reference monument |
| Set 5/8" rebar and remonumentation cap | Set 5/8" rebar and remonumentation cap |
| 4" below grade | 4" below grade |
| 10" Quad Maple N27°E 45.55' | 4" W. Pine N06°E 50.18' |
| 10" Maple S83°E 26.66' | 7" Elm S02°W 79.17' |
| P.Pole S40°E 88.22' | Steel fence post N90°W 17.50' |
| Guard Rail Post S08°E 64.63' | Phone manhole N39°W 50.55' |



LIBER **010** PAGE **135**

Signed by *Richard C. Dunn*

Date **DECEMBER 4, 1995**

Surveyor's Michigan License No. 12020