

MICHIGAN
DEPARTMENT OF CONSERVATION
FORESTRY DIVISION

LAND CORNER RECORD

T. 35 N. R. 1W
T. 36 1W

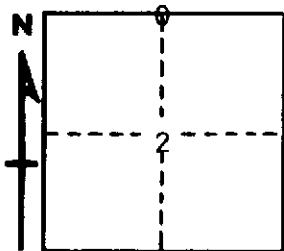
CHEBOYGAN COUNTY

DESCRIPTION OF CORNER ¼ CORNER COMMON TO SECTIONS 2 - 35

CORNER MONUMENT SET 1" PIPE WITH 4" ALUMINUM CAP

DATE MONUMENT PLACED AND WITNESSED June 22, 1965

WITNESSES TO CORNER.....



7" CEDAR N56E 11.6

7" BALSAM S15E 24.9

AND

CIRCLE CORNER REGISTERED

DESCRIPTION IN DETAIL AS TO HOW CORNER WAS LOCATED AND IDENTIFIED OR RESTORED.

THIS CORNER WAS FOUND WHILE MAKING A SURVEY IN THIS TOWNSHIP. FOUND AN OLD SQUARED POST AT CORNER AND EVIDENCE OF ANOTHER POST UNDER SURFACE. ONE POSSIBLE U.S.B.T. STUMP IN PLACE. APPEARS TO HAVE BEEN USED IN OTHER SURVEYS IN THIS VICINITY. NO OTHER EVIDENCE OF THIS CORNER IMMEDIATELY AVAILABLE.

SURVEYOR'S SEAL

SIGNED Kenneth Ostling DATE JUNE 30, 1965
REGISTERED LAND SURVEYOR
K. J. Ostling, #10068