

MICHIGAN
DEPARTMENT OF CONSERVATION
FORESTRY DIVISION

LAND CORNER RECORD

T. 36
T 35

N.R. 1 W
N R 1 W

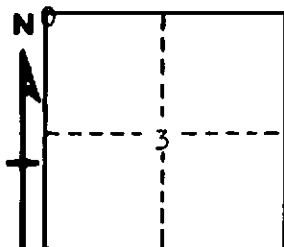
CHEBOYGAN COUNTY

DESCRIPTION OF CORNER SECTION CORNER COMMON TO SECTIONS 3 - 4 - 33 - 34

CORNER MONUMENT LEFT 6" CONCRETE MONUMENT IN PLACE

DATE MONUMENT PLACED AND WITNESSED JUNE 22, 1965

WITNESSES TO CORNER.....



CIRCLE CORNER REGISTERED

6" ELM N55W 5.2

5" MAPLE N44E 25.2

AND

DESCRIPTION IN DETAIL AS TO HOW CORNER WAS LOCATED AND IDENTIFIED OR RESTORED.

This corner was found while making a survey in this township. Found 6" concrete monument and 3/4" ~~iron~~ bar at fence corner which we conclude was established and recorded by Bowen in early 1900's. Sites for Bowen witnesses. Accepted as properly located in view of no evidence to the contrary.

SURVEYOR'S SEAL

SIGNED *Kenneth J. Ostling* DATE June 30, 1965
REGISTERED LAND SURVEYOR #10068
K. J. Ostling