

MICHIGAN
DEPARTMENT OF CONSERVATION
FORESTRY DIVISION

LAND CORNER RECORD

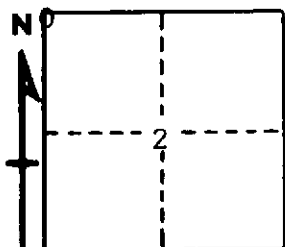
T. 35 N. R. 1W
T. 36 1W CHEBOYGAN COUNTY

DESCRIPTION OF CORNER SECTION CORNER COMMON TO SECTIONS 2 - 3 - 34 - 35

CORNER MONUMENT 1" PIPE WITH 4" ALUMINUM CAP

DATE MONUMENT PLACED AND WITNESSED JUNE 22, 1965

WITNESSES TO CORNER.....



7" HARD MAPLE	S17W	33.0
7" HARD MAPLE	N40W	35.0
AND		
8" BASSWOOD	N82E	11.0

DESCRIPTION IN DETAIL AS TO HOW CORNER WAS LOCATED AND IDENTIFIED OR RESTORED.

THIS CORNER WAS ESTABLISHED WHILE MAKING A SURVEY IN THIS TOWNSHIP. SET CORNER ON LINE OVER $\frac{1}{4}$ AND SECTION CORNER EAST, MAKING $\frac{1}{2}$ MILES OF SECTION 2 EQUAL LENGTH. THIS PLACES CORNER MOST IN CONFORMITY WITH CORNERS TO NORTH, AND FITS OKAY FOR MEASUREMENT WEST AND SOUTH. NO EVIDENCE OF OBTS OR ANY PREVIOUS CORNER.

SURVEYOR'S SEAL

SIGNED Kenneth J. Ostling DATE June 30, 1965
REGISTERED LAND SURVEYOR
K. J. Ostling, #10068