

RECEIVED FOR RECORD

1999 CHEBOYGAN COUNTY REMONUMENTATION 00 JAN -3 PM 12:43
LAND CORNER RECORDATION CERTIFICATE
Filing Requirement of Act 74, Mich. P.A. 1970

For corners in Cheboygan (County)

Located In:	Corner Code #
36N R 3W	B-5
T R	
T R	
T R	
T R	
S T R	
S T R	
S T R	
S T R	

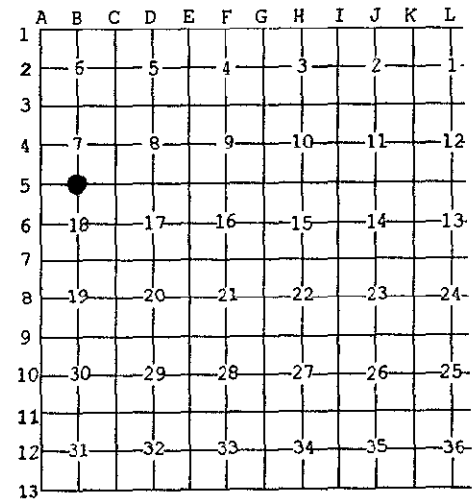
Wally Pappas
CLERK/REGISTER
CHEBOYGAN COUNTY MICHIGAN

MAR 03 2000

SECTION Register of Deeds Stamp & File Number

4. Lot No. _____, Recorded Plat _____
5. Private Claims _____

I, Brian K. Fullford, in a field survey on August, 1999, do hereby state that under requirements of P.A. 74, Michigan P.A. of 1970, the corner points mentioned in lines 1 and 2 above were in conformance with regulations and rules therefore as required in the current manual of survey instructions of the United States Department of the Interior, Bureau of Land Management or by a decree of a Court of Law and/or that the corner points mentioned in lines 3, 4 and 5 above were in conformance with the rules of the Michigan Board of Land Surveyors or by a Decree of a Court of Law; established, re-established, monumented, recovered, found as expressed below:



NOTE: Not more than 2 corners, all in the same town and range, may be recorded on this certificate.

A. Description of original monument and accessories and/or subsequent restoration:

Resurvey 1855 Set Post 12" Hemlock East 18 Lks. 18" Y. Birch N58°W 19 Lks.	Nov. 1954 O. Doyle Rls. #7319 Found 1 1/4" pipe 3" Maple NW 62.75' 12" Maple SW 61.70'	Sept. 1977 O. Doyle Rls. #7319 Set 3/4" Pipe w/plug 12" Spruce N30°E 51.57' 5" Spruce N34°W 50.55' 6" Maple S28°W 33.86'
--	---	--

B. Description of corner evidence found and/or method applied in restoring or reestablishing corner:

Fnd 3/4" pipe @ road centerline
12" Maple N10°W 63.0' no tag
14" Stump N30°E 51.7'
12" Spruce N34°W 50.30' no tag
14" Maple S28°W 33.95' no tag



C. Description of monument for corner and accessories established to perpetuate locating the position of the corner:

B-5 Set 5/8" X 36" iron bar with remonumentation cap inside 3/4" pipe. Position is accepted as a careful and faithful perpetuation of the original corner.
7" Spruce S36°E 36.20' Set tag 41099
14" Maple S25°W 33.95' Set tag 41099
12" Spruce N36°W 50.30' Set tag 41099
12" Hemlock N33°E 61.43' Set tag 41099

Signed by *B. K. Fullford*
Surveyor's Michigan License No. 41099

Date 12/17/99

