

MICHIGAN
DEPARTMENT OF CONSERVATION
FORESTRY DIVISION

LAND CORNER RECORD

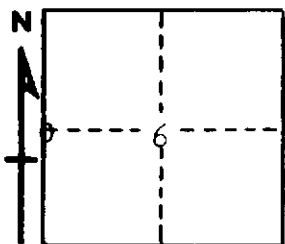
T. 37 N.R. 1 E.
T. 37 N.R. 1 W.
Cheboygan COUNTY

DESCRIPTION OF CORNER 1/4 corner common to Sections 6 - 1

CORNER MONUMENT Drove 1/2" iron bar below surface

DATE MONUMENT PLACED AND WITNESSED November 1, 1963

WITNESSES TO CORNER.....



7" R. Pine N 28 E 18.5'

10" R. Oak S 29 W 90.9'

AND

CIRCLE CORNER REGISTERED

DESCRIPTION IN DETAIL AS TO HOW CORNER WAS LOCATED AND IDENTIFIED OR RESTORED.

This corner was set by proportionate measurement between section corners while making a survey in this area. Could locate nothing for a previous corner. Falls in N - S road.

SURVEYOR'S SEAL

SIGNED *Harold J. Ostling* DATE December 16, 1963
REGISTERED LAND SURVEYOR 10,068