

MICHIGAN  
DEPARTMENT OF CONSERVATION  
FORESTRY DIVISION

LAND CORNER RECORD

T. 37 N.R. 1 E

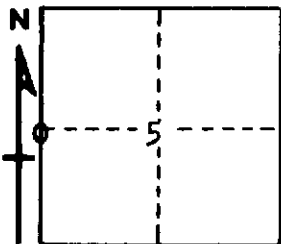
Cheboygan COUNTY

DESCRIPTION OF CORNER 1/4 corner common to sections 5 and 6

CORNER MONUMENT Set 1" pipe with 4" aluminum cap

DATE MONUMENT PLACED AND WITNESSED July 8, 1965

WITNESSES TO CORNER.....



CIRCLE CORNER REGISTERED

7" W. Birch N 82 E 6.7'

5" W. Pine S 35 W 41.9'

AND

DESCRIPTION IN DETAIL AS TO HOW CORNER WAS LOCATED AND IDENTIFIED OR RESTORED.

This corner was set by proportionate measurement between section corners while making a survey in this township. Unable to positively identify U.S. evidence or previous corner.

SURVEYOR'S SEAL

SIGNED *Kenneth J. Ostling* DATE October 18, 1965  
REGISTERED LAND SURVEYOR #10068