

MICHIGAN
DEPARTMENT OF CONSERVATION
FORESTRY DIVISION

LAND CORNER RECORD

T. 37 N.R. 1 E.

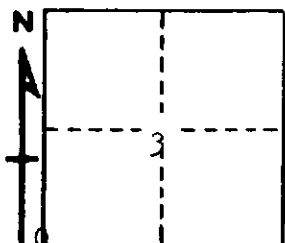
Cheboygan COUNTY

DESCRIPTION OF CORNER Section corner common to Sections 3 - 4 - 9 - 10

CORNER MONUMENT Set 1" pipe with 4" aluminum cap

DATE MONUMENT PLACED AND WITNESSED December 12, 1963

WITNESSES TO CORNER.....



24" W. Pine stp N 44 W 54.2'

7" Balsam N 65 E 26.1

AND

CIRCLE CORNER REGISTERED

DESCRIPTION IN DETAIL AS TO HOW CORNER WAS LOCATED AND IDENTIFIED OR RESTORED.

This corner was restored while making a survey in this area. Set corner from remains of probable U. S. BTs. This point checks for measurement and line south, as well as east and west, and checks swamp edges in three directions. Very likely the restoration of the original corner.

SURVEYOR'S SEAL

SIGNED *Kenneth J. Osting* DATE December 17, 1963
REGISTERED LAND SURVEYOR #10,068