

MICHIGAN
DEPARTMENT OF CONSERVATION
FORESTRY DIVISION

LAND CORNER RECORD

T. 37 N.R. 1 E.

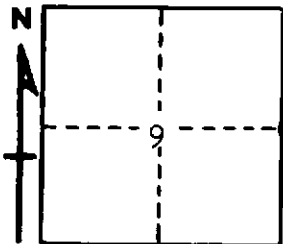
Cheboygan COUNTY

DESCRIPTION OF CORNER 1/4 corner common to Sections 9 - 10

CORNER MONUMENT Set 1" pipe with 4" aluminum cap

DATE MONUMENT PLACED AND WITNESSED December 12, 1963

WITNESSES TO CORNER.....



CIRCLE CORNER REGISTERED

6" Balsam S 6 W 8.2'

7" Balsam N 83 W 10.2

AND

DESCRIPTION IN DETAIL AS TO HOW CORNER WAS LOCATED AND IDENTIFIED OR RESTORED.

This corner was restored while making a survey in this area. Set corner from original line tree located 47 links south of corner. Longbutt stump standing with evidence of line notches on both sides. This point further supported by measurements and line to other corners in this vicinity. Original BTs obliterated.

SURVEYOR'S SEAL

SIGNED *Donald J. Ostling* DATE December 17, 1963
REGISTERED LAND SURVEYOR 10,068