

# LAND CORNER RECORDATION CERTIFICATE

Filing Requirement of Act 74, Mich. PA 1970

For Corners In: \_\_\_\_\_ Located In \_\_\_\_\_ Corner Code # \_\_\_\_\_  
 Cheboygan (County)

1. Public Land Survey	T	37N	R	1E	G-7
	T	37N	R	1E	F-7
2. Property Controlling in Section	S	_____	T	_____	_____
	S	_____	T	_____	_____
3. Miscellaneous Property in Section	S	_____	T	_____	_____
	S	_____	T	_____	_____

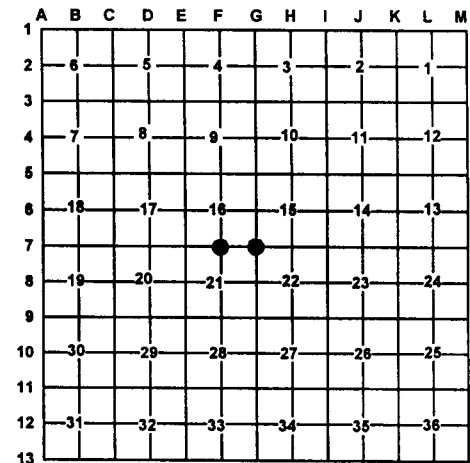
Register of Deeds Stamp & File Number

4. Lot No: \_\_\_\_\_ Recorded Plat: \_\_\_\_\_

5. Private Claims: \_\_\_\_\_

I, Carl T. Kiiskila, in a field survey on October 31, 2001 do hereby state that under requirements of PA 74, Michigan PA of 1970, the corner points mentioned in lines 1 and 2 above were in conformance with regulations and rules therefore as required in the current manual of survey instructions of the United States Department of the Interior, Bureau of Land Management or by a decree of a Court of Law and/or that the corner points mentioned in lines 3, 4 and 5 above were in conformance with the rules of the Michigan Board of Land Surveyors or by a Decree of a Court of Law; established, re-established, monumented, recovered, found as expressed below:

**NOTE: Not more than 2 corners, all in the same town and range, may be recorded on this certificate.**



**A. Description of original monument and accessories and/or subsequent restoration:**

**G-7 G.L.O. George H. Cannon D.S. 1854**  
 Set post corner section 15, 16, 21, and 22  
 Wit: Cedar 6 S18°E 10 links  
 Cedar 8 N18°W 20 links  
 The Michigan Department of Conservation set a 1" pipe with brass cap from both original B.T.'s in place but in poor condition, while doing a survey in the township in November of 1950.  
 Wit: 5" W. Birch N74°W 45 links  
 4" Spruce N43°E 44 links  
 4" S. Maple S64°E 7 links

**F-7 G.L.O. George H. Cannon D.S. 1854**  
 Set quarter section post  
 Wit: Tamarack 6 N5°E 28 links  
 Tamarack 5 S5°E 62 links  
 The Michigan Department of Conservation re-established this corner by proportionate measurement while doing a survey in the township in November of 1950.  
 Wit: 5" Tamarack N79°E 2.15 chains  
 3" Tamarack S62°E 1.61 chains  
 10" Red Pine S23°E 3.74 chains

**B. Description of corner evidence found and/or method applies in restoring or re-establishing corner:**

**G-7 Found D.N.R. monument as set by the Michigan Department of Conservation while doing a survey in November of 1950.**

**F-7 Found D.N.R. monument as set by the Michigan Department of Conservation while doing a survey in November of 1950.**



**C. Description of monument for corner and accessories established to perpetuate locating the position of the corner:**

**G-7 Found D.N.R. Monument**  
 Wit: \*10" Maple S68°E 5.39'  
 4" Balsam S46°W 18.83'  
 6" Maple S72°W 11.98'  
 8" Balsam N10°W 20.66'  
 Carsonite Post North 1'±

**F-7 Found D.N.R. Monument**  
 Wit: 5" White Pine N45°W 64.78'  
 1 1/4" Pipe North 13.30'  
 14" Red Pine S76°E 92.92'  
 \*22" Red Pine S16°E 247.3'  
 Carsonite Post North 1'±

\* Old witnesses by others

\* Old witnesses by others

Signed by: Carl T Kiiskila

Date: 2-20-02

Surveyor's Michigan License No.: 33981