

Cons. 4047  
REV. 10/60

MICHIGAN  
DEPARTMENT OF CONSERVATION  
FORESTRY DIVISION

# LAND CORNER RECORD

T. 37 N.R. 1 W.

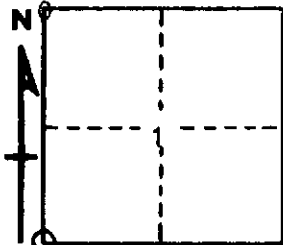
Cheboygan COUNTY

DESCRIPTION OF CORNER Section corner common to Sections 1 - 2 - 11 - 12

CORNER MONUMENT Set 1" pipe with 4" brass cap

DATE MONUMENT PLACED AND WITNESSED November 21, 1963

WITNESSES TO CORNER.....



20" R. Pine stp N 55 E 52.1'

7" B. Oak S 1 W 65.8'

AND

**DESCRIPTION IN DETAIL AS TO HOW CORNER WAS LOCATED AND IDENTIFIED OR RESTORED.**

This corner was established by double proportionate measurement while making a survey in this area. Nothing available for previous corner, and can make no positive identification of original BTs.

SURVEYOR'S SEAL

SIGNED *Kenneth J. Osting* DATE November 21, 1963  
REGISTERED LAND SURVEYOR #10,068