

MICHIGAN
DEPARTMENT OF CONSERVATION
FORESTRY DIVISION

LAND CORNER RECORD

T. 37 N.R. 1 W.

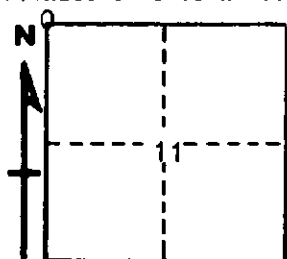
Cheboygan COUNTY

DESCRIPTION OF CORNER Section corner common to Sections 2 - 3 - 10 - 11

CORNER MONUMENT Set 1" pipe with 4" aluminum cap

DATE MONUMENT PLACED AND WITNESSED November 21, 1963

WITNESSES TO CORNER.....



CIRCLE CORNER REGISTERED

10" R. Oak S 70 W 41.1'

5" Maple N 36 E 42.4'

AND

DESCRIPTION IN DETAIL AS TO HOW CORNER WAS LOCATED AND IDENTIFIED OR RESTORED.

This corner was established while making a survey in this township. Set corner on line over 1/4 and section corner west, making the 1/2 miles of equal measurement. Nothing can be located for a previous corner and nothing left for U. S. B's. Strict proportionate measurement would result in gross nonconformity with apparent occupation, and it was presumed the corners on this line originally had some relationship to each other. Felt this the best method for reestablishing this corner.

SURVEYOR'S SEAL

SIGNED *Kenneth Ostling* DATE December 16, 1963
REGISTERED LAND SURVEYOR #40,068