

MICHIGAN  
DEPARTMENT OF CONSERVATION  
FORESTRY DIVISION

# LAND CORNER RECORD

T. 37 N.R. 1 W.

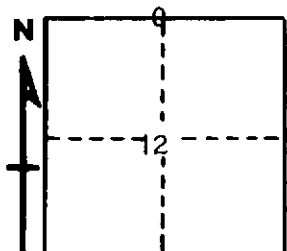
Cheboygan COUNTY

DESCRIPTION OF CORNER 1/4 corner common to Sections 1 - 12

CORNER MONUMENT Set 1" pipe with 4" brass cap

DATE MONUMENT PLACED AND WITNESSED November 21, 1963

WITNESSES TO CORNER.....



CIRCLE CORNER REGISTERED

26" W. Pine stp East 78.2'

5" R. Pine N 18 E 73.9'

AND

DESCRIPTION IN DETAIL AS TO HOW CORNER WAS LOCATED AND IDENTIFIED OR RESTORED.

This corner was set by proportionate measurement, midpoint on line, between section corners. No evidence of corner and nothing for U. S. B.Ts.

SURVEYOR'S SEAL

SIGNED *Kenneth Ostling* DATE December 16, 1963  
REGISTERED LAND SURVEYOR 10,068