

MICHIGAN
DEPARTMENT OF CONSERVATION
FORESTRY DIVISION

LAND CORNER RECORD

T. 37 N.R. 1 W.
T. 38 N.R. 1 W.

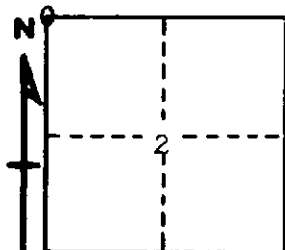
Cheboygan COUNTY

DESCRIPTION OF CORNER Section corner common to Sections 2 - 3 - 34 - 35

CORNER MONUMENT Set 1" pipe with 4" brass cap

DATE MONUMENT PLACED AND WITNESSED October 30, 1963

WITNESSES TO CORNER.....



CIRCLE CORNER REGISTERED

8" Cedar S 60 E

6" Tamarack N 47 E 8.8'

AND

DESCRIPTION IN DETAIL AS TO HOW CORNER WAS LOCATED AND IDENTIFIED OR RESTORED.

This corner was found while making a survey in this area. Found very old stake bottom at fence corner, presumably as established in an old survey by Bowen. Two possible BT stumps in place, and this point checks swamp edges very well. Best available evidence of corner.

SURVEYOR'S SEAL

SIGNED *Kenneth J. Ostling* DATE December 30, 1963
REGISTERED LAND SURVEYOR